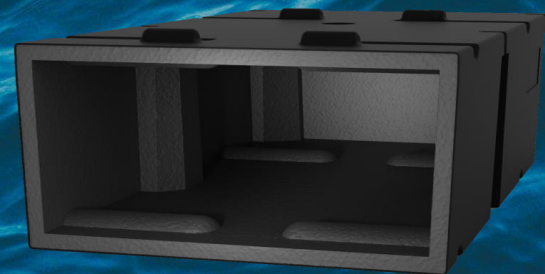
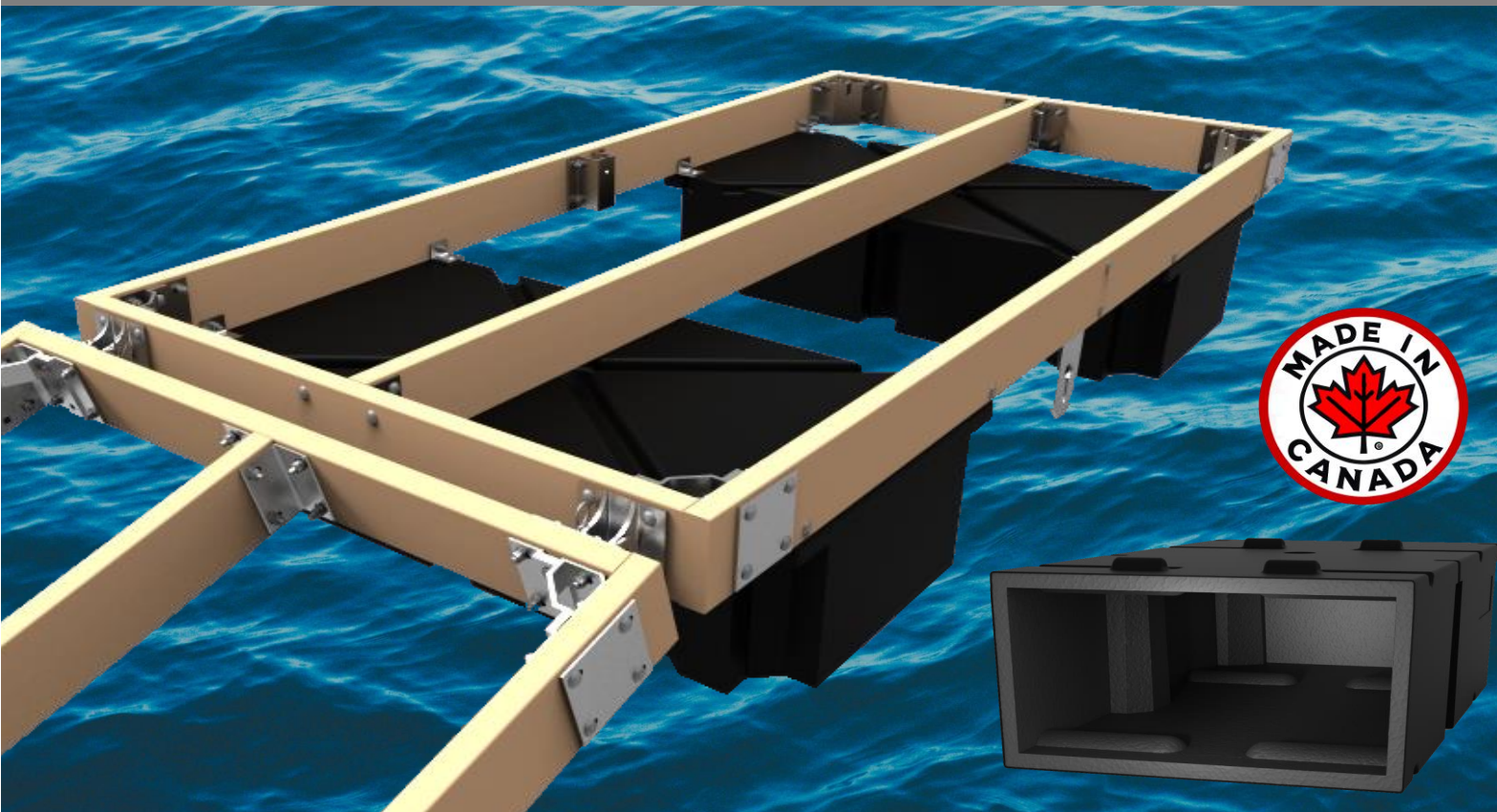




On the
Water
Designs

Floats & Hardware

Builder's Catalogue



Box Floats

Builder's Catalogue

Heavy Wall Box Floats



Shipping Tabs

Less shifting when transporting

2" Threaded Plug

Easy access if service is required

Mounting Slots

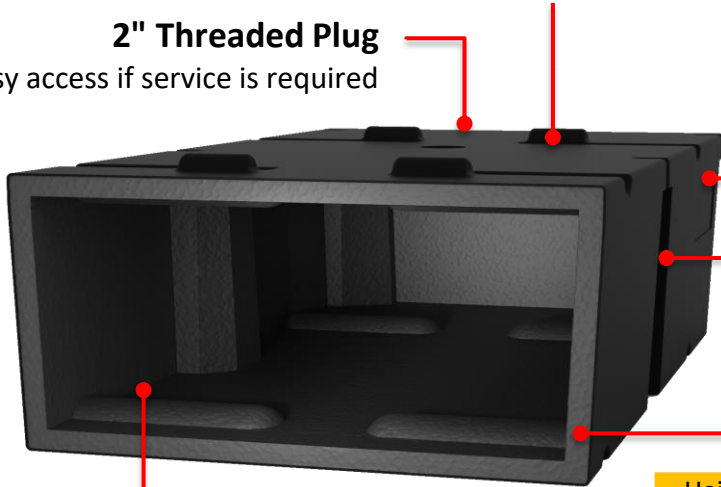
Positioned every 2'
Fits up to 1/2" Hardware

Structural Ribs

Structural integrity on all sides
Tested up to 2,000lbs!

Rigid 1" LLDPE Foam Wall

Dual stage molding process
creates a superior 1-1/8" wall thickness.
Closed cell LLDPE foam will not absorb water



100% Virgin Material

Fully repairable if damaged
Fully Recyclable at end of life

Height	SKU#	Size	Capacity	Price
12"	BF2412-HW	2' x 4' x 12"	450 lbs.	\$ 220
	BF3612-HW	3' x 6' x 12"	995 lbs.	410
	BF3812-HW	3' x 8' x 12"	1,350 lbs.	590
16"	BF2316-HW	2' x 3' x 16"	430 lbs.	\$ 220

Foam Filled Box Floats

Height	SKU#	Size	Capacity	Price
12"	BF2312	2' x 3' x 12"	327 lbs.	\$ 210
	BF2412	2' x 4' x 12"	434 lbs.	230
	BF3412	3' x 4' x 12"	691 lbs.	310
	BF3612	3' x 6' x 12"	1,059 lbs.	480
	BF3812	3' x 8' x 12"	1,367 lbs.	610
	BF4412	4' x 4' x 12"	937 lbs.	390
	BF4612	4' x 6' x 12"	1,406 lbs.	560
	BF4812	4' x 8' x 12"	1,834 lbs.	720
16"	BF2316	2' x 3' x 16"	442 lbs.	\$ 230
	BF2416	2' x 4' x 16"	598 lbs.	280
	BF3416	3' x 4' x 16"	905 lbs.	360
	BF3616	3' x 6' x 16"	1,359 lbs.	510
	BF3816	3' x 8' x 16"	1,822 lbs.	680
	BF4416	4' x 4' x 16"	1,220 lbs.	440
	BF4616	4' x 6' x 16"	1,863 lbs.	640
	BF4816	4' x 8' x 16"	2,475 lbs.	825

.150 LLDPE Shell



EPS Foam Fill

Ensures a damaged float will never sink

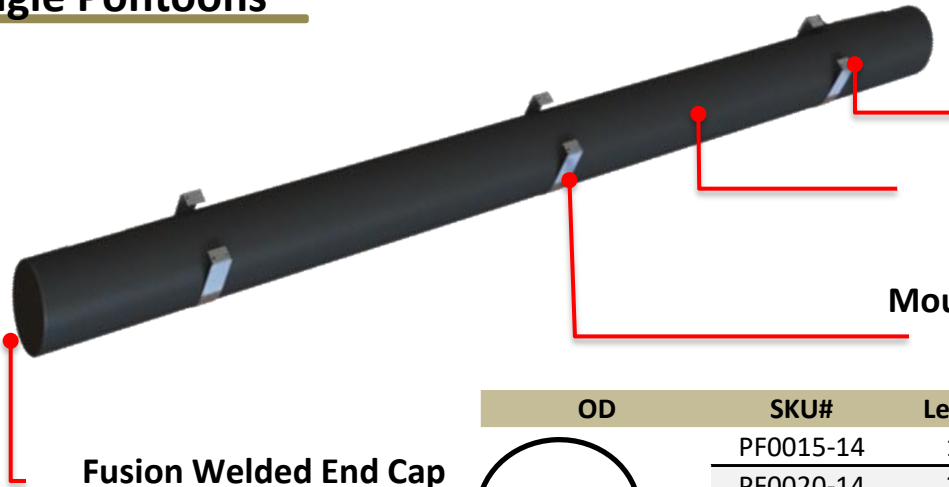
Large Range of Heights & Sizes
Available



Pontoon Floats

Builder's Catalogue

Single pontoons



Aluminum Mounting Straps

HDPE Heavy Wall Pipe

Mounting Straps Accommodate Expansion & Contraction

Fusion Welded End Cap

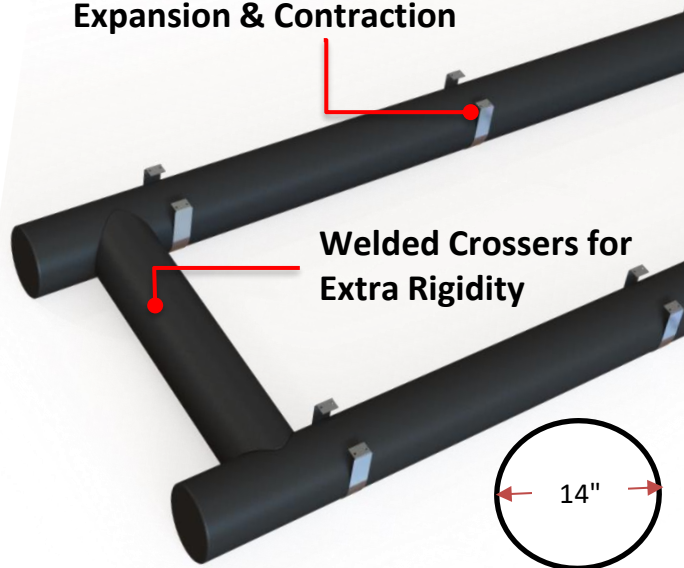
OD	SKU#	Length	Capacity	Straps	Price
14"	PF0015-14	15'	885 lbs	2	\$ 1,025
	PF0020-14	20'	1,240 lbs	3	1,425
	PF0025-14	25'	1,530 lbs	4	1,750
	PF0030-14	30'	1,885 lbs	5	2,125
	AH0140-14	Extra 14" Pontoon Strap			\$ 65
18"	PF0015-18	15'	1,460 lbs	2	1,200
	PF0020-18	20'	2,045 lbs	3	1,650
	PF0025-18	25'	2,520 lbs	4	2,025
	PF0030-18	30'	3110 Lbs	5	2,475
	AH0140-18	Extra 18" Pontoon Strap			\$ 75

Pontoon Frames



SKU#	Size	Capacity	Straps	Price
PF0615-14	6x15	2,575 lbs	4	\$ 2,350
PF0620-14	6x20	3,240 lbs	6	3,250
PF0625-14	6x25	3,900 lbs	8	3,725
PF0630-14	6x30	4,860 lbs	10	4,600
PF0815-14	8x15	2,840 lbs	4	2,900
PF0820-14	8x20	3,925 lbs	6	3,900
PF0825-14	8x25	5,000 lbs	8	4,750
PF0830-14	8x30	6,100 lbs	10	5,750
PF1015-14	10x15	3,660 lbs	4	3,625
PF1020-14	10x20	4,880 lbs	6	4,725
PF1025-14	10x25	6,100 lbs	8	5,700
PF1030-14	10x30	7,320 lbs	10	6,800
PF1215-14	12x15	4,750 lbs	4	4,575
PF1220-14	12x20	6,100 lbs	6	5,800
PF1225-14	12x25	7,450 lbs	8	6,850
PF1230-14	12x30	8,800 lbs	10	8,100

Mounting Straps Accommodate Expansion & Contraction



Welded Crossers for Extra Rigidity



Hardware & Accessories

Builder's Catalogue

Contact Us
 On the Water Designs
 Kilworthy (Muskoka) ON
 (866) 477-0177
 info@onthewaterdesigns.com

Aluminum Dock Hardware



\$ 15.50
Corner Bracket
 AH0025



\$ 40.50
Floating Dock Hinge
 AH0100



\$ 25.00
Foot Pad
 AH0085



\$ 5.65
Brace Attachment
 AH0030



\$ 110.00
HitchHinge
 AH0300



\$ 35.25
Large Foot Pad
 AH0090



\$ 12.00
Chain Corner Attachment
 AH0055



\$ 26.50
Pole Dock Hinge Set
 AH0400



\$ 18.50
Side Leg Holder
 AH0115



\$ 8.30
Stringer Bracket
 AH0125



\$ 8.20
Backer Plate
 AH0020



\$ 16.75
Pole Dock 'J' Connector
 AH0095



\$ 16.75
Flat Chain Retainer
 AH0080



Aluminum Pole - 4'	AH0005-04	\$ 40.00
Aluminum Pole - 6'	AH0005-06	\$ 60.00
Aluminum Pole - 8'	AH0005-08	\$ 80.00

Accessories



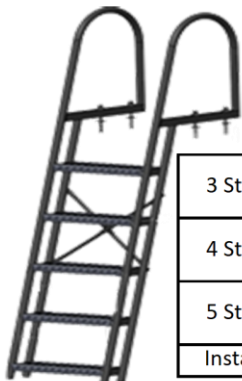
Large Corner Bumper
\$45.00
 BU0065-##
 BE WH BL GY



Heavy Slant P Bumper
\$ 70.00
 10'4" Length
 BU5124-##
 WH BL

NEW! **Solar Dock Lite [Black]**

\$40.00
 SL0050-WH



Angled Ladder

	Black	White	Grey	Measurements
3 Step	\$ 550	\$ 550	\$ 530	ID 18"
	LA0103-BL	LA0103-WH	LA0103-GY	OD 20.5"
4 Step	630	630	590	Step Height 11"
	LA0104-BL	LA0104-WH	LA0104-GY	3 Step 33"
5 Step	700	700	660	4 Step 44"
	LA0105-BL	LA0105-WH	LA0105-GY	5 Step 55"
Install Ladder	LB2020		32	Angle 15°



6" Flip Up Cleat
\$ 25.00
 CLO601-##
 WH BL GY

Install 6" Cleat LB2006 \$ 15.75
 Hardware Only SS9006-CB 9.5

