



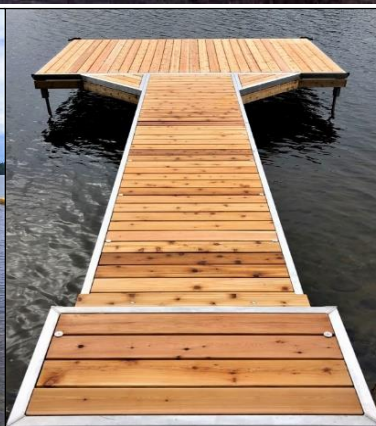
On the
Water
Designs

Tower Docks

Designer Series



*Say Goodbye To Back Pain
And Hello To Tower Docks*



Tower Docks

Designer Series



Is it getting difficult to find help each season when it is time to put your dock in and out? A Tower Dock by On the Water Designs can be lifted & lowered by yourself or with a single helper. Enjoy your dock on your schedule!

Tower Docks are most suitable in water less than 8' deep and where fluctuation is minimal when a boat is tied to it. Muddy bottoms are not a problem but need to be managed properly to ensure easy removal.

Tower Dock solutions include a strong mounting point at shore as well as a solid winch point that holds the dock over the winter.

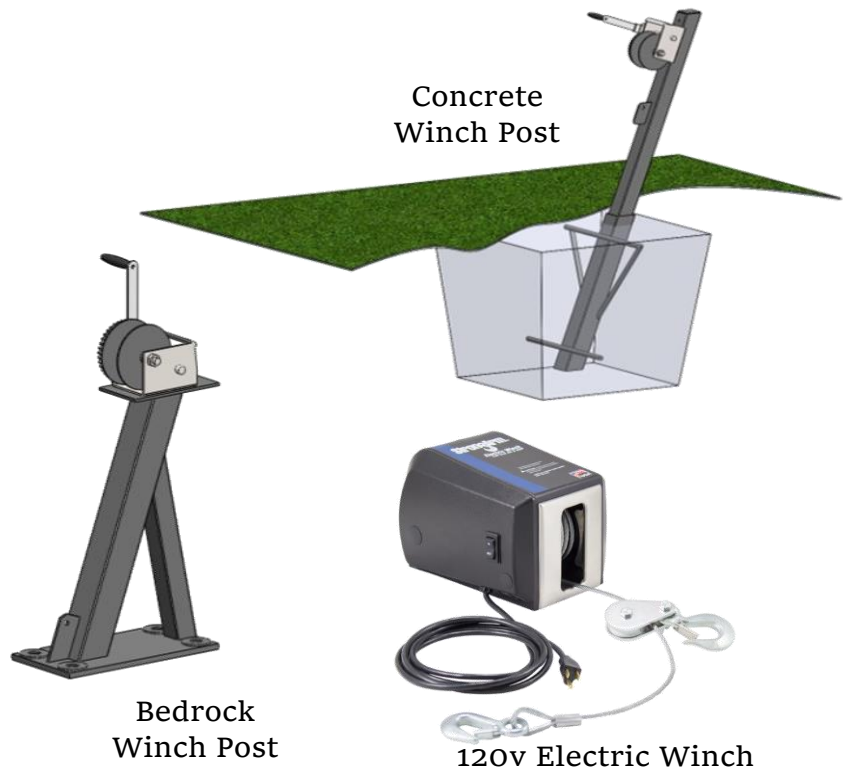
All tower components are hidden below the decking for the summer.

All Tower Docks Include:

- ✓ Hidden Tower Design
- ✓ 8' Towers include HD Tower Upgrade
- ✓ All Rigging Between Tower & Dock
- ✓ Foot Pads & Pole Caps
- ✓ Reinforced Frame & Connection Points
- ✓ 10 Year Welded Frame Warranty

Size		No Decking	Micro Pro PT	Western Red Cedar	PVC Endeck / Thruflow
W	L				
4'	20'	\$3,775 TD0420-NO	\$4,900 TD0420-PT	\$5,650 TD0420-WR	\$7,050 TD0420-PV
	30'	5,850 TD0430-NO	7,350 TD0430-PT	8,500 TD0430-WR	10,900 TD0430-PV
	40'	6,850 TD0440-NO	9,450 TD0440-PT	11,000 TD0440-WR	14,100 TD0440-PV
	50'	8,950 TD0450-NO	12,000 TD0450-PT	13,900 TD0450-WR	17,700 TD0450-PV
6'	20'	4,625 TD0620-NO	6,000 TD0620-PT	6,950 TD0620-WR	8,350 TD0620-PV
	30'	6,850 TD0630-NO	8,750 TD0630-PT	10,100 TD0630-WR	12,200 TD0630-PV
	40'	7,700 TD0640-NO	12,000 TD0640-PT	13,900 TD0640-WR	17,000 TD0640-PV
	50'	10,700 TD0650-NO	14,900 TD0650-PT	17,200 TD0650-WR	21,300 TD0650-PV
8'	20'	6,100 TD0820-NO	7,800 TD0820-PT	9,000 TD0820-WR	11,900 TD0820-PV
	30'	8,250 TD0830-NO	11,200 TD0830-PT	13,000 TD0830-WR	16,700 TD0830-PV
	40'	10,500 TD0840-NO	14,300 TD0840-PT	16,700 TD0840-WR	20,800 TD0840-PV
	50'	13,000 TD0850-NO	19,300 TD0850-PT	22,300 TD0850-WR	29,500 TD0850-PV
10' x 15' End Patio		3,425 TD1015-NO	5,850 TD1015-PT	6,950 TD1015-WR	8,800 TD1015-PV

Corner Walkway	3'	\$610 DS0003-NO	\$680 DS0003-PT	\$680 DS0003-WR	\$890 DS0003-PV
	4'	660 DS0004-NO	780 DS0004-PT	780 DS0004-WR	1,025 DS0004-PV
	5'	730 DS0005-NO	870 DS0005-PT	870 DS0005-WR	1,150 DS0005-PV



Winch	\$ 580.00	\$ 990.00	
	Manual OH3500	120V AC OH4000	
Winch Post	\$ 320.00	\$ 420.00	
	Bedrock SH3105	Concrete SH3110	
Winch Cable Pkg	\$ 330.00		
	50' DS9110-50		
Winter Anchor Cable Pkg	\$ 140.00	\$ 155.00	\$ 180.00
	40' DS9115-40	60' DS9115-60	80' DS9115-80

Delivery & Installation is available through a professional 3rd party installation crew.

Delivery is \$200/HR one way. Installation is generally 10% - 13% and may change based on specific requirements.

All prices subject to change without notice. All measurements are approximate

Tower Docks

Designer Series



Tower Dock Options

Soft Bottom Solution	Sinking past your ankles? Use Large Feet	\$ 36.75	\$ 17.00			
	Sinking to your shins? Use Patio Stones	Large Foot AH0090	Patio Stone OH0015			
Hidden Leg Upgrade	Dock Legs stay hidden below your decking for a clean appearance. Pole adjustment is limited to 8"	\$ 75.00	\$ 115.00	\$ 160.00	\$ 200.00	
		20' DS9070-20	30' DS9070-30	40' DS9070-40	50' DS9070-50	
Skirting (/ft)	Deck board running below dock frame adds an attractive natural finish and hides the gap between the dock and water	\$ 5.85	\$ 11.75	\$ 8.30	\$ 9.80	\$ 17.00
		Brackets Only DS9025-NO	PVC Brackets DS9025-NR	PT DS9025-PT	Cedar DS9025-WR	PVC DS9025-PV
Anti-Sway Bar	Telescopic bar runs diagonally between two legs. Optional on 6' legs & recommended with 8' legs	\$ 95.00	\$ 105.00	\$ 115.00	\$ 125.00	
		4' AH0010-04	6' AH0010-06	8' AH0010-08	10' AH0010-10	
Aluminum Pole	1-1/2" Sched 40 marine grade aluminum pole. Anti-sway bars recommended where 8' poles are used	\$ 40.00	\$ 65.00	\$ 85.00	\$ 260.00	
		4' AH0005-04	6' AH0005-06	8' AH0005-08	24' AH0005-24	
Step for Tower Dock	Add built-in steps to a tower dock to start the dock higher up on shore but maintain a lower freeboard	\$ 1,700.00	\$ 2,150.00	\$ 2,825.00		
		1 Step (7.5") DS9080-01	2 Step (15") DS9080-02	3 Step (22.5") DS9080-03		
Accessory Reinforcement	HD aluminum bracket welded below decking to reinforce cleats & mooring whips	\$ 70.00	\$ 70.00			
		Cleat AH0040	Whip AH0041			

Shore Platforms



			No Decking	Micro Pro PT	Western Red Cedar	PVC Endeck / Thruflow
Bedrock	Reinforced Dock frame mounted to bedrock with 1" threaded rod (included)	4' x 4'	\$ 910	\$ 1,125	\$ 1,225	\$ 1,525
			DS44BR-NO	DS44BR-PT	DS44BR-WR	DS44BR-PV
		6' x 4'	1,025	1,350	1,500	2,025
		DS64BR-NO	DS64BR-PT	DS64BR-WR	DS64BR-PV	
		8' x 4'	1,175	1,500	1,775	2,325
			DS84BR-NO	DS84BR-PT	DS84BR-WR	DS84BR-PV
Sand & Clay	Reinforced dock frame with 6' steel legs (included) driven into soil.	4' x 4'	1,200	1,425	1,575	1,825
			DS44SC-NO	DS44SC-PT	DS44SC-WR	DS44SC-PV
		6' x 4'	1,325	1,650	1,950	2,325
		DS64SC-NO	DS64SC-PT	DS64SC-WR	DS64SC-PV	
		8' x 4'	1,475	1,800	2,050	2,625
			DS84SC-NO	DS84SC-PT	DS84SC-WR	DS84SC-PV

Shore Attachments

		4'	6'	8'	10'
Shore Beam	6"x6" PT Beam. Used as an adaptor for the shore angle on uneven bedrock.	\$ 340	\$ 400	\$ 450	\$ 450
		DS2000-04	DS2000-06	DS2000-08	DS2000-10
Shore Angle	4" x 4" Aluminum Angle. Mount to shore beam or wood deck	480	530	600	670
		DS4400-04	DS4400-06	DS4400-08	DS4400-10
Shore Plate	4" x 1/4" Aluminum Plate. Mount to the face of a flat surface	340	370	430	440
		DS5000-04	DS5000-06	DS5000-08	DS5000-10
Shore Channel	4" x 2-1/2" Aluminum Channel. Mount to the face of an uneven surface	450	530	710	790
		DS3000-04	DS3000-06	DS3000-08	DS3000-10
Concrete Angle	4' x 6" Aluminum Angle. Mount to new or existing concrete	590	750	880	1,050
		DS4600-04	DS4600-06	DS4600-08	DS4600-10

* Note: Concrete Pour Available Separately



Concrete Angle on New Concrete



Shore Beam & Angle



Shore Platform (Sand & Clay)

Tower Docks

Designer Series

Contact Us
 On the Water Designs
 Kilworthy (Muskoka) ON
 (866) 477-0177
 info@onthewaterdesigns.com


Heavy Slant P Bumper



\$ 65.00
 10'4" Length
 BU5124-##

WH BL

Large Corner Bumper



\$47.50
 BU0065-##

BE WH BL GY


Heavy Outside Corner



\$45.00
 BU0060-##

WH BL GY

6" Flip Up Cleat




\$ 25.00
 CLO601-##

WH BL GY

Install 6" Cleat LB2006 \$ 15.00
 Hardware Only SS9006-CB 10.00

Bumper Installation



Factory Install Bumper	LB2010	\$ 25.00
Factory Install Corner	LB2015	10.00
Bumper Screws (100pk)	SS0822-SC	30.00

Premium Solar Light



\$55.00
 SL0000-WH



Hand Rail - Aluminum		
10'	DS9055-10	\$ 570
15'	DS9055-15	860
20'	DS9055-20	1,150

Solar Dock Lite (2pk)



\$55.00
 SL0010-WH



Premium Mooring Whips

	Capacity	Size
8'	2,500 lbs	\$ 400.00
		WH0250
12'	5,000 lbs	600.00
		WH0500
14'	10,000 lbs	700.00
		WH1000
Wake Watcher	3,500 lbs	650.00
		WH0350
Install Whips		40.00
		LB2025



Wake Watcher™

Solar Post Lite (2pk)



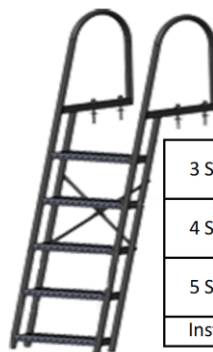
\$95.00
 SL0025-WH



Water Entry Staircase

Height	Grey
3 Step	\$ 920.00
	LA5003
4 Step	1,075.00
	LA5004
5 Step	1,250.00
	LA5005
6 Step	1,400.00
	LA5006
7 Step	1,550.00
	LA5007
8 Step	1,700.00
	LA5008

Measurements	
Inside Width	27.5"
Outside Width	31.5"
Railing Height	32"
Step Rise	7.5"



Angled Ladder

	Black	White	Grey	Measurements	
3 Step	\$ 550.00	\$ 550.00	\$ 510.00	ID	18"
	LA0103-BL	LA0103-WH	LA0103-GY	OD	20.5"
4 Step	620.00	620.00	560.00	Step Height	11"
	LA0104-BL	LA0104-WH	LA0104-GY	Lower	33"
5 Step	690.00	690.00	600.00	Lower	44"
	LA0105-BL	LA0105-WH	LA0105-GY	Lower	55"
Install Ladder	LB2020		30.00	Angle	15°